

# Zodiac Rotary Banner

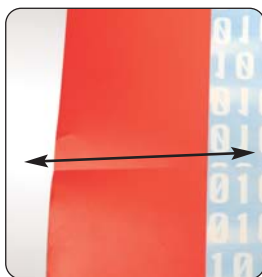
UB611



Give your promotion maximum impact with this stylish and eye-catching motorised banner system.

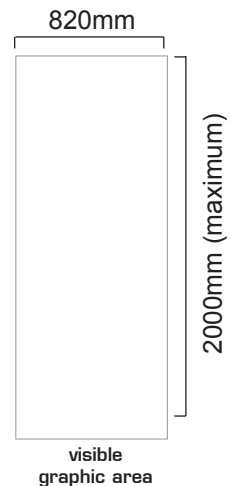
## features & benefits

- Wall or ceiling mounted
- Scrolling loop graphic
- Compact neat styling
- Available in silver
- 4000mm (h) x 820mm (w) wide looped graphic, visible area up to 2000mm approx
- Includes 12V power adaptor and carry bag



### Graphic Finishing Notes:

Graphic should be 'butt' joined to create the loop required with no overlap. The butt join should be completed with a diagonal cut tapering down by approx 20mm over the width of the graphic. The diagonal join is recommended as this helps the graphic negotiate the rollers when the Zodiac is in use. Join the free ends using 2" (50mm) wide sellotape or similar thin single sided adhesive tape, sticking onto the inside of the loop.



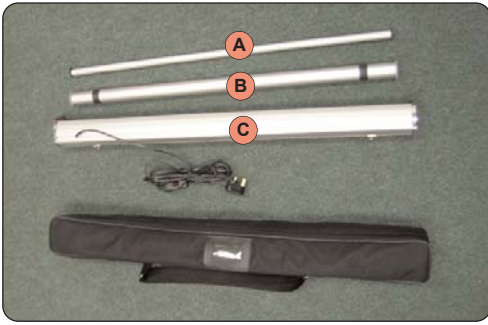
hardware specifications	graphic specifications	additional info
Hardware Dimensions (mm) 90 (h) x 920 (w) x 85 (d)  Weight: 2.5kg approx (including carry bag)	Visible Graphic Dimensions (mm): 2000 (h) x 820 (w)  Actual Graphic Dimensions (mm): 4000 (l) x 820 (w)	Included in kit: Canvas carry bag, power adaptor, drive unit and guide roller  availability: Silver

**NB** - It is recommended that graphics are transported in a separate tube to ensure they do not become damaged. The graphic material should be as flexible as possible, 150 micron polyester film is recommended.

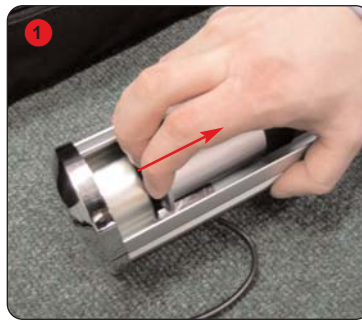
We are continually improving and modifying our product range and reserve the right to vary the specifications without prior notice. All dimensions and weights quoted are approximate and we accept no responsibility for variance. E&OE.

UI138U REV 1 04/05

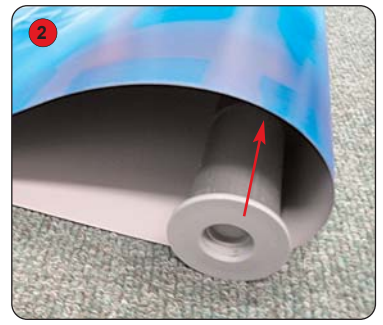
# Assembly Instructions



Kit includes: guide roller (A), drive unit roller (B) and drive unit (C)



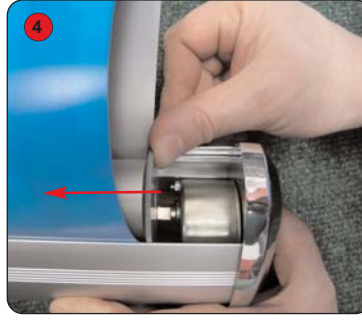
1 Remove the drive roller (B) from the drive unit, pushing it towards the spring end of the drive unit.



2 Slide the drive roller inside the looped graphic.



3 Take the graphic and roller and secure into the drive unit.



4 Locate the drive roller into the spring end of the drive unit, compress the spring and fit other end of drive roller.



5 Take the guide roller (A) and slide through the looped graphic. The guide roller will hang freely and act as a weight.



6 Suspend the drive unit from a ceiling or wall using the loops provided.



Other products in our rotary and display banner range include:



## Revolva

Economy motorised scrolling banner stand with twin telescopic arms allowing variable graphic height.



## Hercules

Floor standing rotary banner, larger visible area than the Maverick and larger footprint. 2015m (h) x 850mm (w) approx. visible area



## Maverick

Floor standing rotatory banner, visible area of 1930mm (h) x 780mm (w), large aluminium base for extra stability