

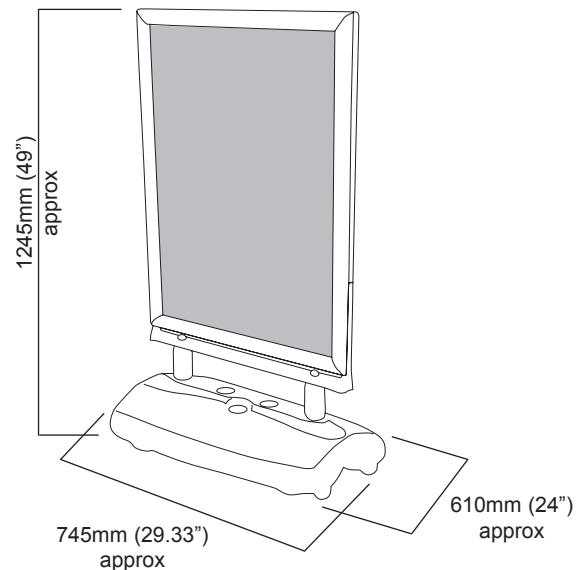
Whirlwind

Whirlwind is a heavy-duty double sided swing sign for displaying A1 posters. The unit has a wheeled compact moulded base that can be filled with water or sand. The snap frame poster holders make changing your message extremely quick and simple.



features & benefits

- Easy front loading, tamper proof aluminium snap frames
- Suitable for indoor or outdoor use
- Heavy-duty construction
- *Wheeled compact moulded base that can be filled with water or sand*
- Double sided
- Available in A1 portrait format
- Complete with UPVC protective graphics covers
- Flat packed for easy transportation



hardware specifications

Assembled dimensions:
1245mm (h) x 745mm (w) x 610mm (d) approx
49" (h) x 29.33" (w) x 24" (d) approx

Weight:
14kg approx when empty & 49.5kg approx
when filled with water. (33 litres approx)
30.86lbs approx when empty & 110 lbs approx
when filled with water (8.70 US gallons approx)

graphic specifications

Maximum Graphic Dimensions:
841mm (h) x 595mm (w) approx
33.11" (h) x 23.39" (w) approx

Visible Graphic Dimensions:
835mm (h) x 585mm (w) approx
32.87" (h) x 23" (w) approx

Substrate:
1mm (0.039") thick maximum
For outdoor use encapsulate graphic
or use suitable substrates

additional info

Availability:
Aluminium frame with
Anodised silver finish and
grey moulded base.

Assembly Instructions



Kit includes: Poster frame, moulded base
2x plastic screw caps and poster frame
tool.



Slide the poster frame
supports into the holes in
the moulded base.



Secure the poster frame to the
moulded base using the plastic nuts.



Open the snap frame by inserting
the edge of the tool into the frame.



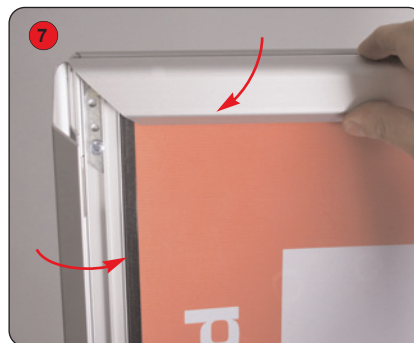
Push down on the tool to lever the
hinged edges open. Start with the top
and then open the remaining sides.



Remove the protective outer cover.



Fit the graphic and protective cover
into the frame recess.



Close the snap frame.
Start with the top edge and then
close the remaining sides.



Whirlwind can easily be moved by
lowering the unit onto the wheeled
side