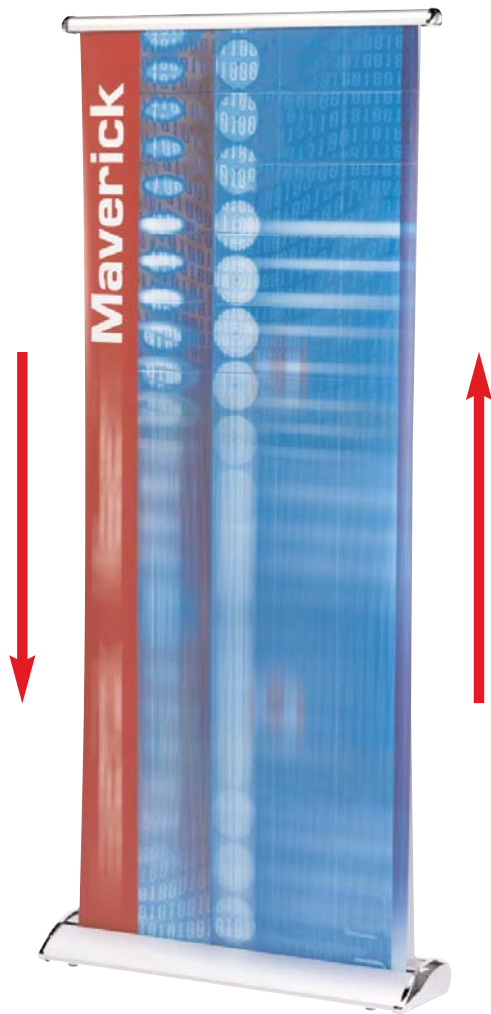


# Maverick Rotary Banner

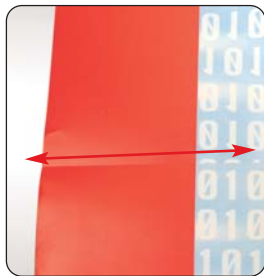
UB621



Give your promotion maximum impact with this stylish and eye-catching motorised banner.

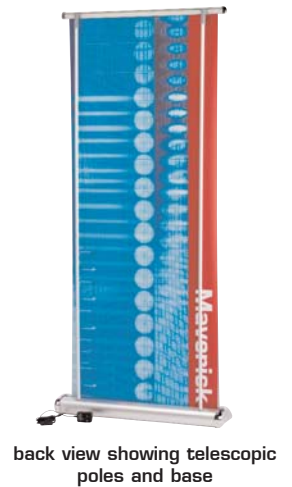
## features & benefits

- Scrolling loop graphic - scrolls up or down
- Free standing aluminium frame
- Includes 12v power adaptor and canvas bag
- Available in silver or black
- 4060mm (h) x 780mm (w) wide looped graphic, 1930mm (h) approx visible area



### Graphic Finishing Notes:

Graphic should be 'butt' joined to create the loop required with no overlap. The butt join should be completed with a diagonal cut tapering down by approx 20mm over the width of the graphic. The diagonal join is recommended as this helps the graphic negotiate the rollers when the Maverick is in use. Join the free ends using 2" (50mm) wide sellotape or similar thin single sided adhesive tape, sticking onto the inside of the loop.



hardware specifications	graphic specifications	additional info
<p>Hardware Dimensions (mm) 2035 (h) x 870 (w) x 210 (d)</p> <p>Weight: 6.5kg approx (including bag)</p>	<p>Visible Graphic Dimensions (mm): 1930 (h) x 780 (w)</p> <p>Actual Graphic Dimensions (mm): 4060 (l) x 780 (w)</p>	<p>Included in kit: Canvas carry bag, power adaptor, top rail &amp; roller, base, base roller, 2 x bungee poles</p> <p>Availability: Black or silver</p>

**NB** - It is recommended that graphics are transported in a separate tube to ensure they do not become damaged. The graphic material should be as flexible as possible, 150 micron polyester film is recommended.

We are continually improving and modifying our product range and reserve the right to vary the specifications without prior notice. All dimensions and weights quoted are approximate and we accept no responsibility for variance. E&OE.

U1132U REV 1 04/05

# Assembly Instructions



Kit includes: bungee pole x 2 (D), base (B), top rail (E), base roller (C), bag (A)



To remove the base roller (C), firstly remove the basecover.



Remove the roller by squeezing the end opposite to the spring end, detaching it from the base.



Take each bungee pole (D) and fully extend until they click into place.



Insert fixed bungee poles into holes each side of base. Ensure they are pushed home fully.



Feed the graphic loop onto the base roller.



Load roller and graphic back into the base, squeezing roller into position, fitting the spring end first.



Remove the roller from the top rail (E) by squeezing it towards the spring end.



Slide roller into the top of the graphic loop.



Fix the graphic and roller back into the top rail.



Attach the top rail onto the top of both bungee poles. Push down onto the spring loaded ends.



Ensure the top of the bungee poles fix into the groove at the back of the rail.



Slide the cover back into position.



Ensure the cover clicks into position securely.



Finally, connect the supplied mains plug to the unit and switch on the power.

Other products in our rotary and display banner range include:



## Revolva

Economy motorised scrolling banner stand with twin telescopic arms allowing variable graphic height.



## Hercules

Floor standing rotary banner, larger visible area than the Maverick and larger footprint. 2015m (h) x 850mm (w) approx. visible area



## Zodiac

Wall or ceiling mounted rotary banner system with scrolling loop graphic and visible area up to 2000mm.